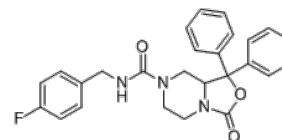


**Product Name** : SHA68  
**Cat. No.** : PC-38622  
**CAS No.** : 847553-89-3  
**Molecular Formula** : C<sub>26</sub>H<sub>24</sub>FN<sub>3</sub>O<sub>3</sub>  
**Molecular Weight** : 445.494  
**Target** : Neuropeptide Y Receptor  
**Solubility** : 10 mM in DMSO



## Biological Activity

SHA68 is a selective non-peptide neuropeptide S receptor (NPSR) antagonist with IC<sub>50</sub> of 22.0 and 23.8 nM for human NPSR Asn107 and Ile107 variants respectively, K<sub>e</sub> value of 13.7 nM (Ile107 variant).

SHA68 induced antidepressant-like effects in bed nucleus of the stria terminalis (BNST) of learned helplessness (LH) rats (an animal model of depression).

## References

Medina G, et al. Mol Pain. 2014 May 29;10:32.

Hassler C, et al. ACS Chem Neurosci. 2014 Aug 20;5(8):731-44.

Shirayama Y, et al. Behav Brain Res. 2015 Sep 15;291:67-71.

**Caution: Product has not been fully validated for medical applications. Lab Use Only!**

E-mail: tech@probechem.com